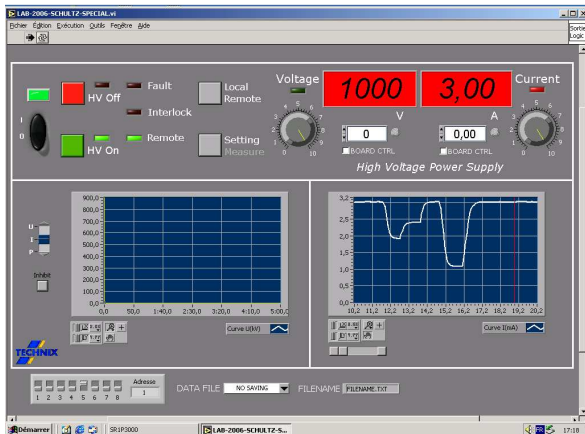
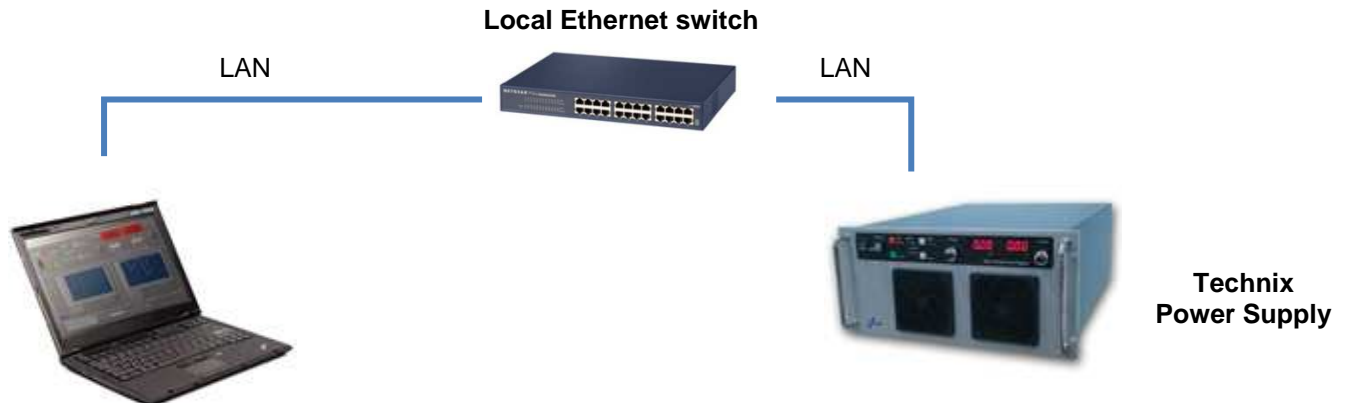


OPTIONS

Ethernet Interface



With this option, TECHNIX power supplies can be controlled via Ethernet LAN.



Labview Runtime
(Windows OS)

- ▶ **Control via virtual COM-Port**
A simple Windows computer equipped with a Network Interface is required
- ▶ **Delivered with LABVIEW Runtime**
 - User gets on his PC the image of the generator front panel
 - Settings and controls available like they should be on the front panel
 - All the functionality of the standard front panel:
 - Setting and Display of Voltage and Current
 - Indicators : HVon, HVoff, Voltage/Current Regulation, Line, Fault, Interlock, Remote mode
 - Preset & OCP/OCL functions
 - HVon, HVoff control
 - Inhibit
 - Histograms & Measurement savings

Reference : OPTIONETH